

Log Shipping

By

Sarabpreet Singh Anand

Sarabpreet Singh Anand



- 8 Years of enriched experience
 - Got MCTS, MCITP: Admin, MCT certifications
 - Vice President & Regional Mentor SQLServerGeeks.com
 - SQL DBA @ Hewlett Packard
-
- Expert in handling VLDBs & Disaster Management.
 - Conducted more than 25 SQL Server Boot camp Trainings across India.
 - Speaker at SQLServerGeeks.com In-person events & Microsoft Community Tech Days (CTD)
 - Follow Me @Sarab_SQLGeek
 - Email : sarab@SQLServerGeeks.com
sarabpreet.anand@gmail.com

About SQLServerGeeks.com

- One of the fastest growing SQL Server communities
- Blogs, Articles, Podcasts, In-person events, webcasts
- Millions of page views
- People behind SQLServerGeeks: Amit Bansal, Sarabpreet Singh, Parikshit Savjani, Abhay Chaudhary, Raunak Jhawar, Ahmed Osama, Amit Karkhanis, Vasudev Menon, Ritesh Medhe, Rakesh Mishra, Piyush Bajaj, Rahul Sharma, Satnam Singh, Bhagwan Singh
- If you want to contribute, email us at admin@SQLServerGeeks.com or visit Join Us section on the website

Agenda

- How Log Shipping Works? + Scope of protection?
- Planning for LS
- Relation of LSN?
- Amazing Benefits of LS
- Why & When to use LS?
- Common Problems\ solutions.

How Log Shipping Works?

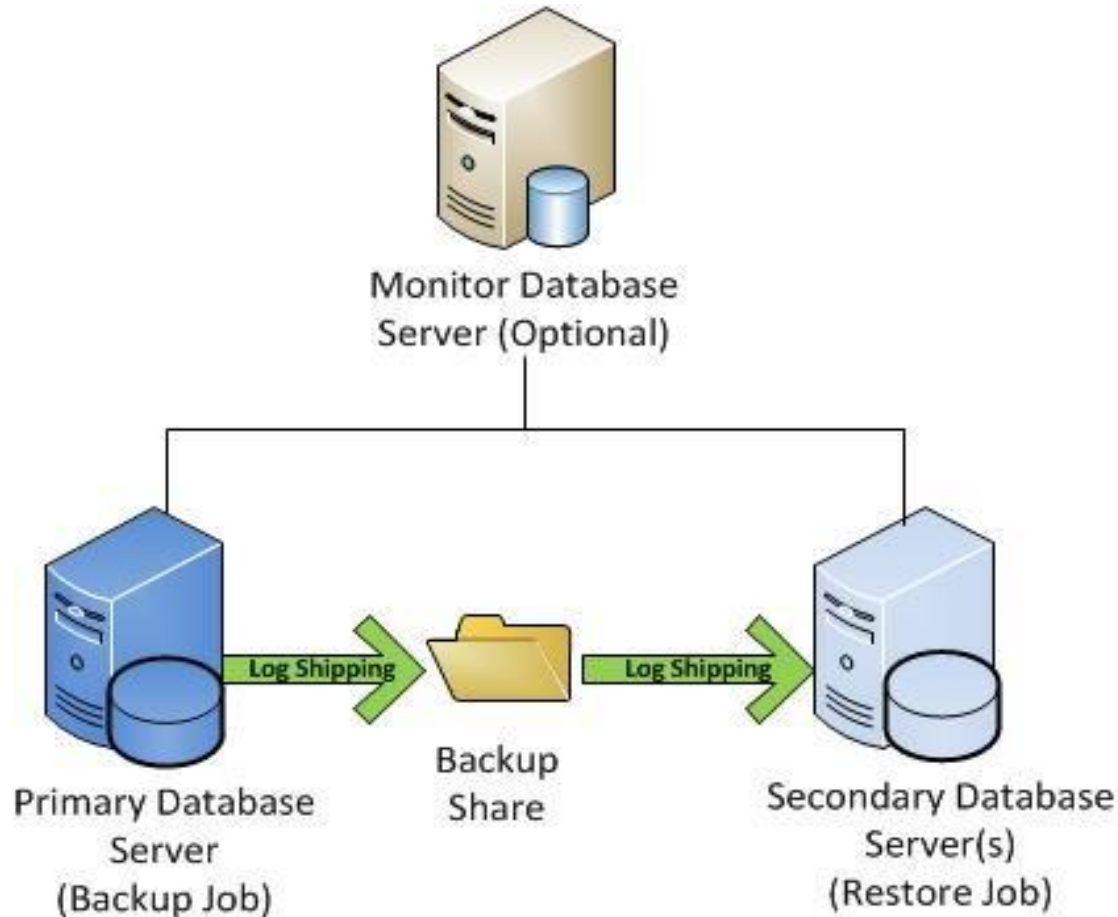
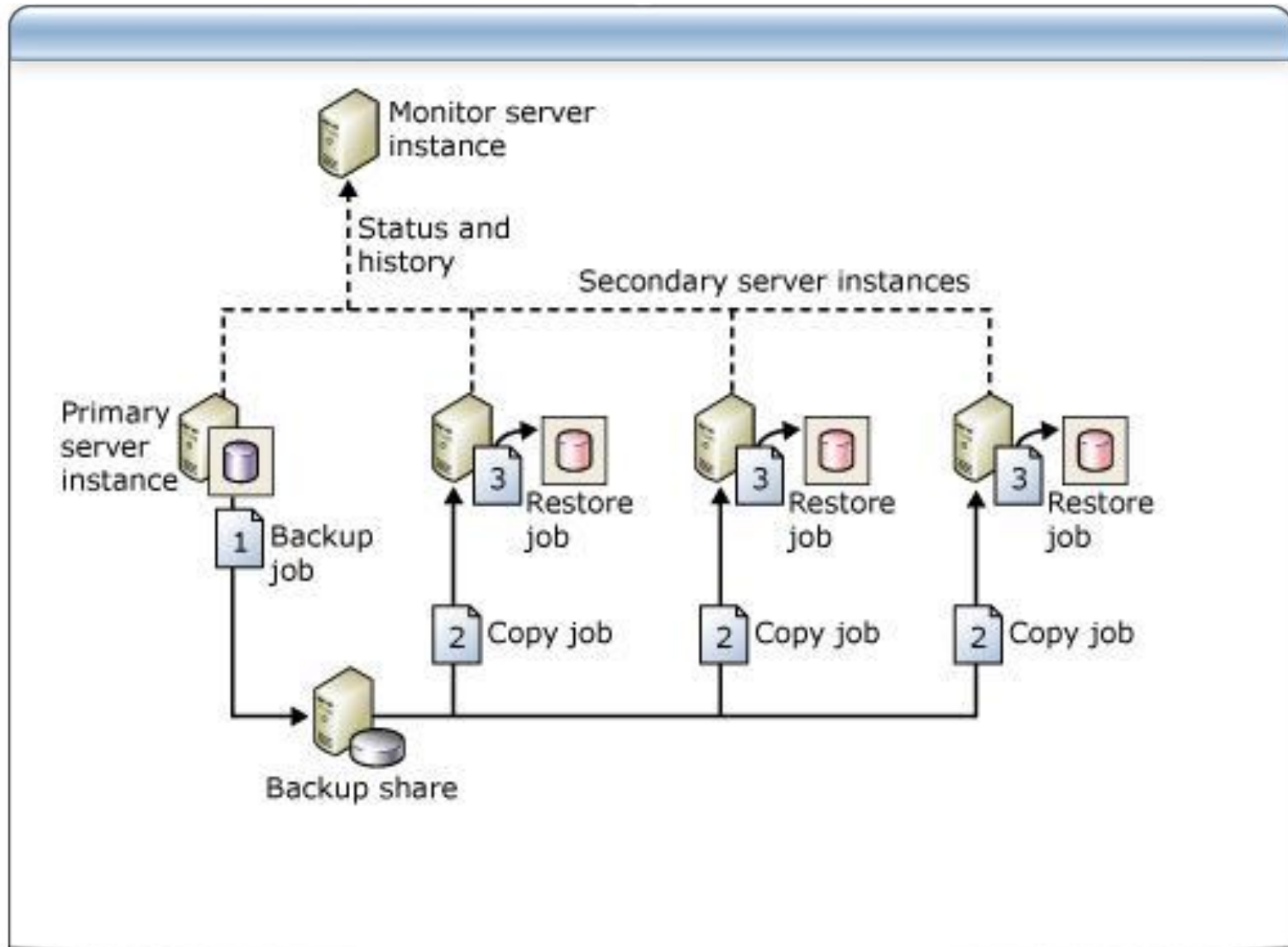


Image Source: http://blogs.technet.com/resized-image.ashx/_size/650x0/_key/CommunityServer-Blogs-Components-WeblogFiles/00-00-00-85-48/8357.LogShipping.jpg

Multiple Standby with Log Shipping



Planning for Log Shipping

- Recovery model of the database
- File Share
- SQL Agent State
- Collation Settings
- Backup schedule
- Etc.

Poll: Ever heard of LSN?

- Let's see how many attendees know the relation between LSN and Log Shipping.

Ever heard of LSN & its Relation

- Broken chain of LSN

- Why?
- Check!
- Prevent.

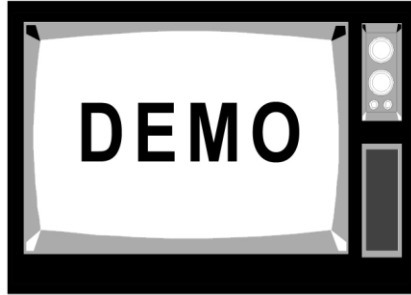
- http://www.sqlservergeeks.com/articles/sql-server-bi/6/restrict-the-use-of-no_log-and-truncate_only

- <http://www.sqlservergeeks.com/articles/sql-server-bi/4/auto-truncate-log-in-full-recovery-model>

Image Source:

http://3.bp.blogspot.com/-p5gJLiHfec/TcAjPEa4-SI/AAAAAAAAAnw/saz7cxJF-tM/s1600/Traffic+Sign_Chennai.jpg

Demo: LSN



- Broken LSN?
- Things to consider to avoid such scenarios.

Imp. & Amazing Benefits of Log Shipping

- **LS is state-less – NO overhead**
- **Multiple Standby Servers Possible - (n)**
- **No Location Boundaries**
- **Low Resource Overhead**
- **Standby DBs can be accessible**

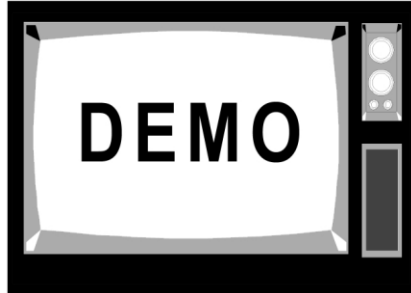
Key takeaways except what we discussed

- **Fix Orphan Users before recovering Standby DB**
- **Make your shared folder hidden by appending \$ to it**
- **Always take backup on a Network Location**
- **Do not recover your DB along with restoring last Tlog Backup, check other Tlog Backups at other places: Source, File Share, Tail Log Backup etc.**
- **Don't forget Dependent Objects like Logins, Jobs, External Files, Certificates etc.**
- **Plan for Client\Application Redirection.**

Problems

- **User Disaster**
- **Reporting needs**
- **Backup File deleted**
- **Not able to login on Standby Server**
- **Weekend Maintenance Problems**

Demo: LSN Chain Broken



- Backup File deleted – How to fix?
 - Don't re-initiate there are other ways to fix it.

Continue your learning...

- Be a member - www.SQLServerGeeks.com
- www.FaceBook.com/SQLServerGeeks
- Twitter @SQLServerGeeks
- Presentation uploaded on www.SQLServerGeeks.com/files

Q&A

Thank you ☺

for suggestions, please email at admin@SQLServerGeeks.com

Post your Questions

@

www.FaceBook.com/SQLServerGeeks